



## GERD & INGE STRAUSS MANOR ON PANTANO

### FAQ

When they visit Strauss Manor for the first time, future residents have many questions about life at the Manor. If you do not see an answer to your questions, we are always happy to help.

Please contact us at (520) 722-9015 or [click here to get in touch with us](#)

### **What services do residents benefit from at Strauss Manor ?**

---

Our Service Coordinator provides a wide array of assistance. She coordinates on-site programs such as food boxes, visiting Community nurses and senior companions. She also assists residents with accessing community support services such as meals-on-wheels, preventive health screening and legal advocacy. She facilitates the activities of a group of dedicated resident volunteers and works tirelessly to secure donations of food, furniture, clothing and craft supplies.



## GERD & INGE STRAUSS MANOR ON PANTANO

### **How is the quality of life at Strauss Manor ?**

---

Strauss Manor provides a monthly newsletter loaded with information and a calendar filled with that month's events and activities. Residents enjoy 24-hour access to the computer center. Coffee is provided each morning in our coffee/billiards room, where many of our residents gather for lively conversation and good company. We keep a well-stocked emergency food pantry for those needing assistance at the end of the month. Our well-equipped wellness center enables our residents to remain fit and healthy as they age. Our inner courtyard is a lovely place to sit and enjoy the sound of birds singing and water bubbling in the fountain. Our residents enjoy planting and caring for the flowers in the raised garden beds.

### **Will I feel at home at Strauss Manor?**

---

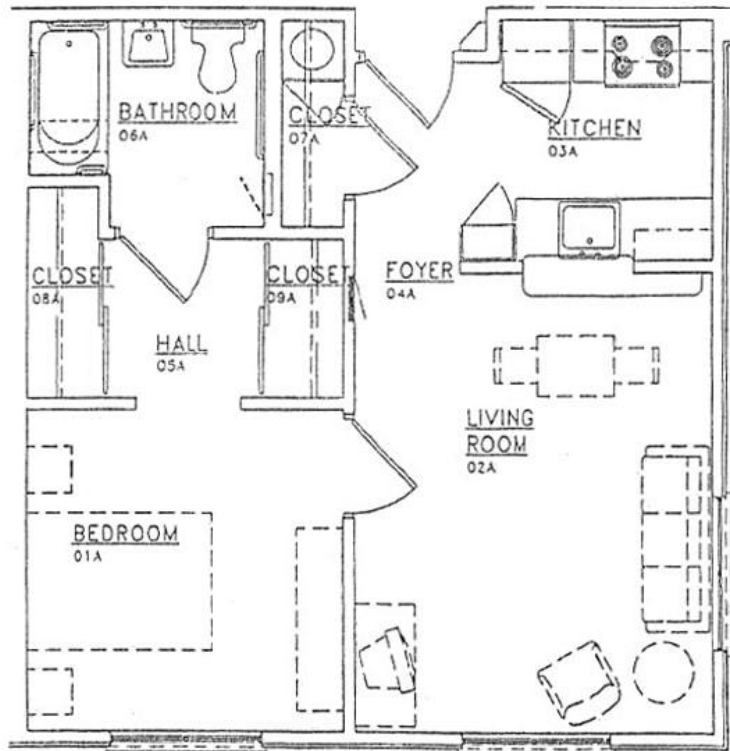
At Strauss Manor, our goal is to create a warm, welcoming environment for you to call your home. All of our units are unfurnished, one bedroom, 565-square foot apartments, complete with bathroom and kitchen. We have four units that are fully ADA accessible. All utilities are included in the rent.

Residents also enjoy access to a number of common areas, including the community room, computer center, library, wellness center and outdoor patio.



# GERD & INGE STRAUSS MANOR ON PANTANO

*Floor Plan of a typical resident's apartment at Strauss Manor*



## **How much does it cost to live at Strauss Manor ?**

---

We are a HUD-funded facility for low-income seniors. Please [contact us](#) for more information on costs and eligibility requirements.



**GERD & INGE  
STRAUSS MANOR  
ON PANTANO**

## **What do I need to know about the eligibility requirements ?**

---

We are a federally assisted multi-family housing Project, developed and operated according to Section 202 PRAC of the National Housing Act, as Amended. The Project accepts the Elderly, which means it accepts households composed of one or more persons at least one of whom is 62 years of age or more at the time of initial occupancy. The Project provides low-cost housing on an equal opportunity basis. We do not discriminate against applicants on the basis of race, color, religion, sex, national origin, familial status, disability or handicap. Our policies comply with Section 504 of the Rehabilitation Act of 1973, the Fair Housing Act amendments of 1988, and Title VI of the Civil Rights Act of 1964.

We keep an active Waiting List for those who are interested in applying. Our applicants are added to the Waiting List in order of the date and time our office receives a completed application.



## GERD & INGE STRAUSS MANOR ON PANTANO

### **What amenities do the residents of Strauss Manor enjoy ?**

---

- Service Coordinator
- Library/Computer Center with internet access
- Laundry Facilities
- Community Room
- Wellness Center with exercise equipment
- Billiards table
- On-site parking
- Outdoor patio with fountain and grill
- Security system and controlled access
- Pet friendly (certain restrictions apply)
- On-site maintenance personnel

### **Can residents smoke at the Strauss Manor ?**

---

We are a non-smoking facility. Smoking is limited to one outside area.

### **Can residents live with their pets at Strauss Manor ?**

---

We do allow residents to have one small pet. Please [contact us](#) for further details.